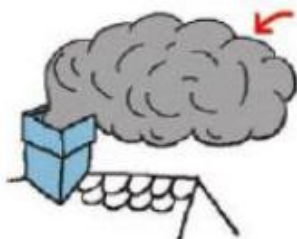
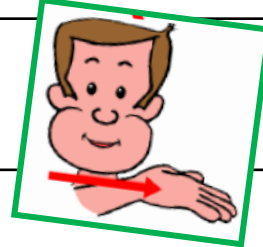




(f)



F F f f



la fumée  
la fumée

*Des syllabes, des mots*

f a



la farine

f é



une fée

f o



la forêt

f i



une ficelle



*Les mots de la classe*



Three horizontal dashed lines for handwriting practice.

Three horizontal dashed lines for handwriting practice.

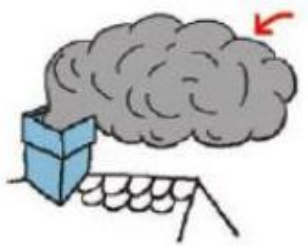
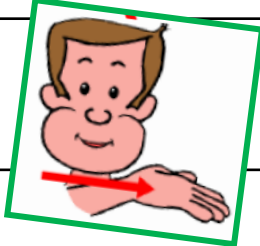
Three horizontal dashed lines for handwriting practice.



(f)

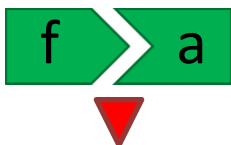


F F f f

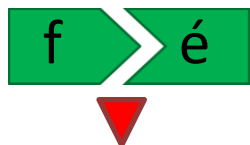


la fumée  
la fumée

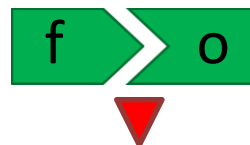
*Des syllabes, des mots*



la farine



une fée



la forêt



une ficelle



*Les mots de la classe*



Three horizontal dashed lines for handwriting practice.

Three horizontal dashed lines for handwriting practice.

Three horizontal dashed lines for handwriting practice.