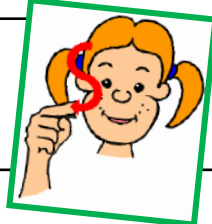




(s)



S s s s



une **s**alade  
une **s**alade

*Des syllabes, des mots*

s a



un **s**apin

s u



du **s**ucre

s o



le **s**oleil

s i



une **s**irène



*Les mots de la classe*



Blank writing area with three horizontal dashed lines.

Blank writing area with three horizontal dashed lines.

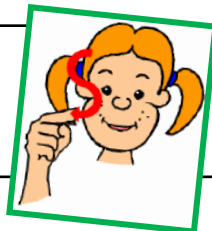
Blank writing area with three horizontal dashed lines.



(s)



S s s s



une **s**alade  
une **s**alade

*Des syllabes, des mots*

s a



un **s**apin

s u



du **s**ucre

s o



le **s**oleil

s i



une **s**irène



*Les mots de la classe*



Three horizontal dashed lines for writing practice.

Three horizontal dashed lines for writing practice.

Three horizontal dashed lines for writing practice.