

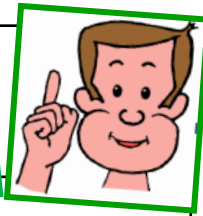
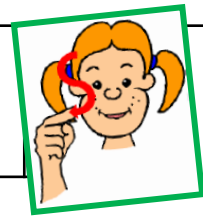


(s)(i)



-ti-

-ti-



Attention !  
Attention !

*Des syllabes, des mots*

ti > on



une addition

ti > en



la patience

i > ti



une initiale

a > ti



la station



*Les mots de la classe*



Blank writing area with dashed lines for handwriting practice.

Blank writing area with dashed lines for handwriting practice.

Blank writing area with dashed lines for handwriting practice.

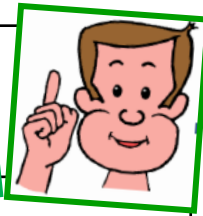
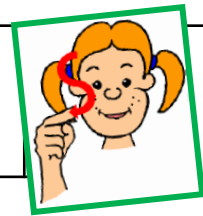


(s)(i)



-ti-

-ti-



Attention !  
Attention !

*Des syllabes, des mots*

ti > on



une addition

ti > en



la patience

i > ti



une initiale

a > ti



la station



*Les mots de la classe*



Three horizontal dashed lines for writing practice.

Three horizontal dashed lines for writing practice.

Three horizontal dashed lines for writing practice.